

NEWINGTON  
LONDON

2 Bedrooms

Apartment

Located in London

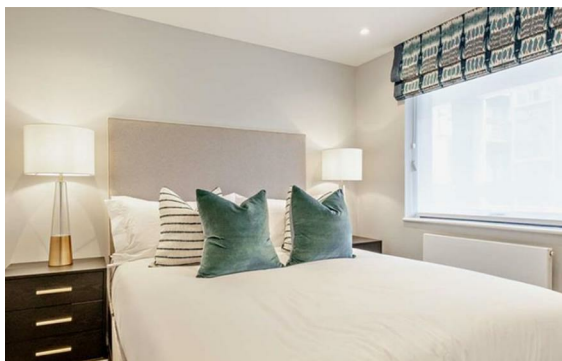
£1,100 Per Month



[info@newingtonstates.com](mailto:info@newingtonstates.com)

<http://www.newingtonstates.com>

020 7724 2233



This well-presented and modern two-bedroom apartment offers bright, practical living accommodation within a well-maintained purpose-built block, ideal for comfortable city living. The property benefits from well-proportioned rooms, a contemporary finish throughout, and an abundance of natural light, creating a welcoming and functional home.

Ideally positioned just moments from Regent's Park and Marylebone Underground Station, the apartment enjoys excellent access to local shops, cafés, transport links, and the wider central London neighbourhoods.

EPC rating: C

### Energy Efficiency Rating: C

Agents Note: Whilst every care has been taken to prepare these particulars, they are for guidance purposes only. All measurements are approximate and are for general guidance purposes only and whilst every care has been taken to ensure their accuracy, they should not be relied upon and potential buyers/tenants are advised to recheck the measurements.

# NEWINGTON LONDON

60 Upper Montagu Street

London

W1H 1SN

020 7724 2233

[info@newingtonstates.com](mailto:info@newingtonstates.com)

<http://www.newingtonstates.com>